

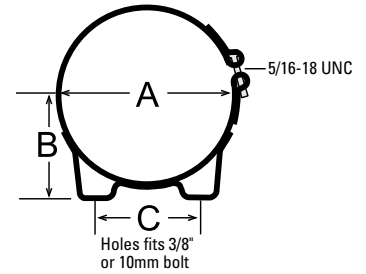
## Muffler Body Band Clamps for Traditional Mufflers



- Aluminized mild steel with high temperature black finish (matches finish on off-road mufflers)
- Band width 1.25" (32mm)
- Intended for traditional mufflers only. For emissions product needs, see Heavy-Duty Muffler Body Bands

### Muffler Body Band Clamps

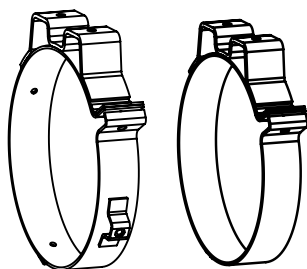
--- A ---		--- B ---		--- C ---		Part Number
in	mm	in	mm	in	mm	
6.00	152	3.75	95	3.75	95	M002117
6.62	168	4.00	102	4.00	102	M002118
8.50	216	5.00	127	5.00	127	M002119
9.00	229	5.50	140	5.50	140	M002120
10.08	256	6.00	152	6.00	152	M002121
11.06	281	6.50	165	6.50	165	M002122
11.84	301	7.00	178	7.00	178	M002123



## Heavy-Duty Muffler Body Band Clamps

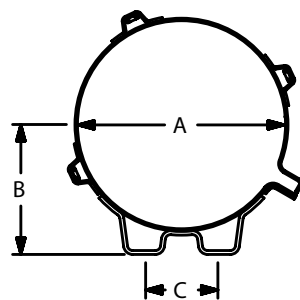
### Clamp Notes:

- Pinch bolts are not included
- Most use 3/8-1-1/2" long grade 5 or 8 grade bolts
- Band width 2.00" (unless noted)
- Reuse existing frame mounting bolts
- Materials is zinc-plated mild steel.



P227803

P230281  
No heat shield  
stand off



### W-Foot Body Bands

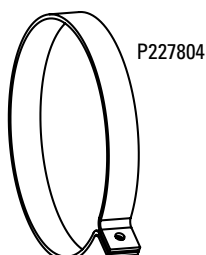
- Use for vertical or horizontal mounting
- Bolts not included

### For Heat Shield Applications

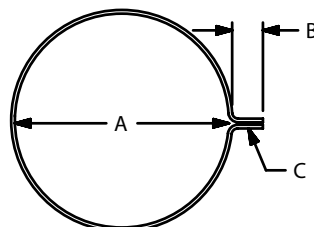
--- A ---		--- B ---		--- C ---		Part Number
in	mm	in	mm	in	mm	
10.00	254	6.28	160	3.5	89	P227803
11.00	269	6.50	165	6.5	165	P229513
13.00	330	7.50	191	6.5	165	P230283

### No Heat Shield Applications

--- A ---		--- B ---		--- C ---		Part Number
in	mm	in	mm	in	mm	
10.00	254	6.28	160	3.50	89	P230282
11.00	269	6.50	165	6.50	165	P230281
13.00	330	7.50	191	6.50	165	P230045



P227804



Band width 1.5" (38mm)

### Muffler Body Bands for Schools Buses

--- A ---		--- B ---		--- C ---		Part Number
in	mm	in	mm	in	mm	
10.00	256	1.75	44	0.40	10	P228241 <sup>1</sup>
11.00	279	1.75	44	0.40	10	P227804 <sup>2</sup>

- 1 - Bluebird conventional bus with Cat Engine Works
- 2 - Bluebird rear engine bus